



# gancedo

1945

nara wallcovering

MU9865

# nara

## MU 9 8 6 5

La colección Nara de papeles japoneses es una recopilación de revestimientos con textura fabricados de manera artesanal siguiendo la tradición japonesa de trenzar a mano fibras naturales como el sisal, la rafia, el cáñamo... por lo que cada pieza es única, irrepetible y cuenta con irregularidades.

El nombre de la colección –Nara– es un homenaje a la antigua capital del Japón medieval, una de las ciudades que todavía conserva el espíritu tradicional del país, además de un buen número de templos y ruinas bien conservados, que son hoy Patrimonio de la Humanidad.

Los colores escogidos para la colección, comprenden tonalidades que le dan un toque de modernidad, como los rosas, azules grisáceos o verdes agua, y algunos metalizados muy elegantes, además están los clásicos tonos marrones, beiges y neutros.

Para la colección se han creado 12 coordinados de los diversos revestimientos, con lo que se puede jugar con varios rollos de papel en un mismo espacio, combinándolos en distintas paredes o colocando uno como zócalo y otro en el resto de la pared.

*The Nara collection of Japanese wallcoverings features a compendium of textured coverings, hand-crafted in accordance with the Japanese tradition of hand-plaiting natural fibres such as sisal, raffia, and hemp...rendering each piece unique, a one-off complete with its own quirks.*

*The name of the collection – Nara – pays homage to the ancient capital of mediaeval Japan, one of the cities which still retains the traditional spirit of the country, as well as a considerable number of well-preserved temples and remains, which now constitute a World Heritage site.*

*The colours chosen for the collection comprise shades which add a dash of modernity, such as pinks, grey-blues and sea greens, along with some very elegant metallics, as well as classic browns, beiges and écrus.*

*Twelve complementary designs have been created for the various wall coverings, all mixing and matching, meaning that you can experiment with several rolls of paper in the same room, intermixing them on different walls or using one for the base and another on the rest of the wall.*



# gancedo

nara  
MU 9 8 6 5

today -night lake



PA7600-006-091

nara-ink blue



PA7588-006-091

kita-turquoise blue



PA7594-002-091

nara-dark green gold



PA7588-002-091

# gancedo

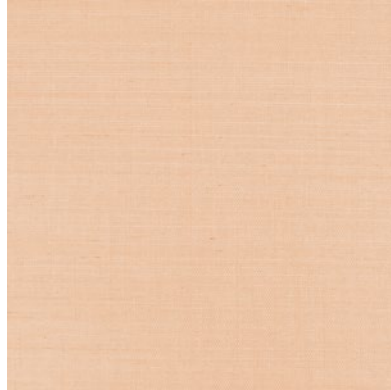
nara  
MU 9 8 6 5

namba-nightfall



PA7590-006-091

kobe-golden peach



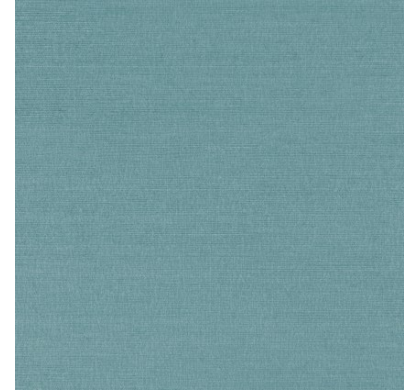
PA7589-004-091

naniwa-turquoise

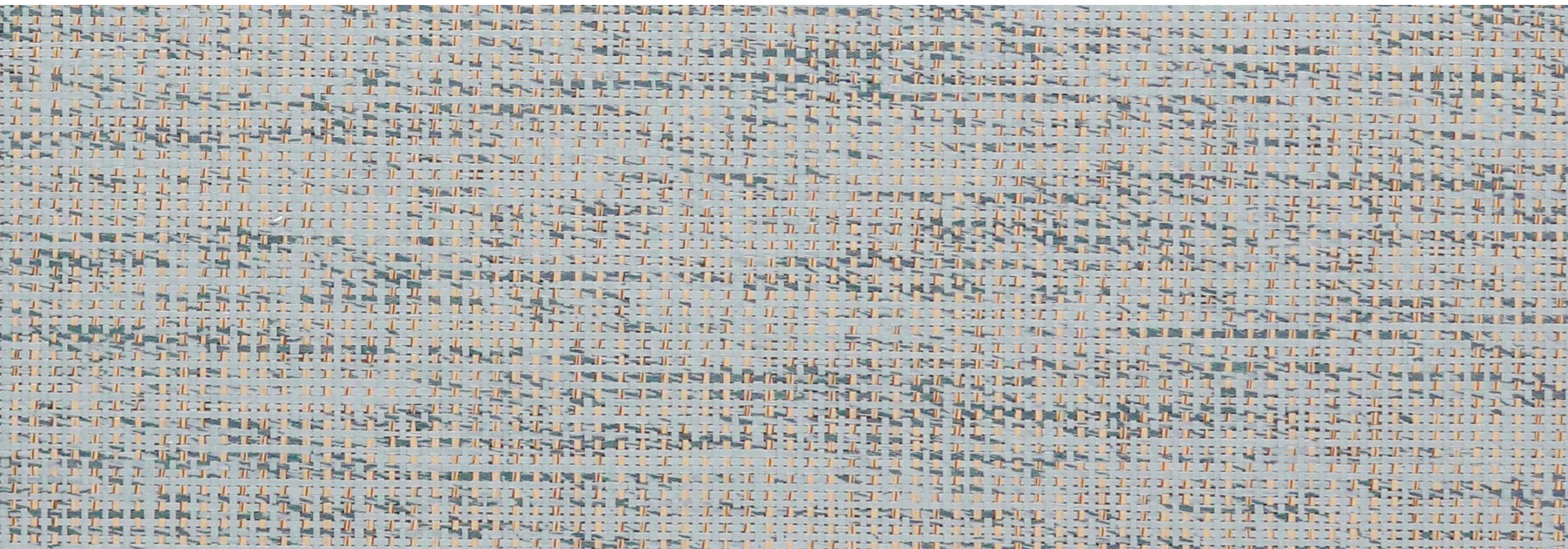


PA7591-006-091

nagai-blue green



PA7593-060-091



# gancedo

nara  
MU 9865

kita-fall down



PA7594-006-091

naniwa-nave



PA7591-060-091





# gancedo

nara  
MU 9 8 6 5

kita-grape basket



PA7594-001-091

kakamura-brick red



PA7595-001-091

taisha-deep diane



PA7598-999-091

kamakura-mustard

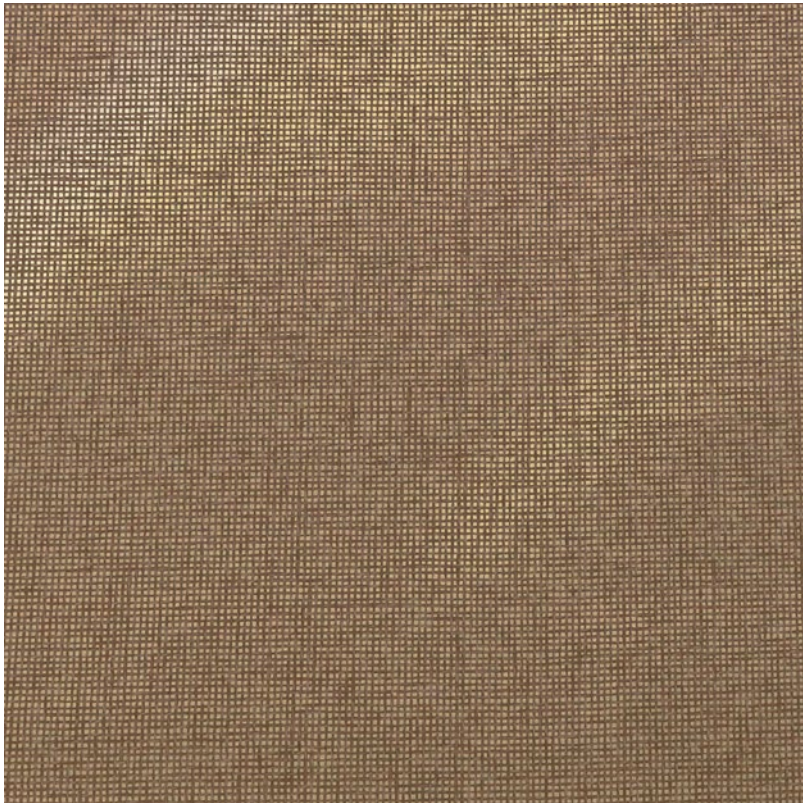


PA7595-031-091

# gancedo

nara  
MU 9 8 6 5

sakuya-sunrise



PA7601-070-091  
*metalizado*

nara-silver gray



PA7588-009-091



# gancedo

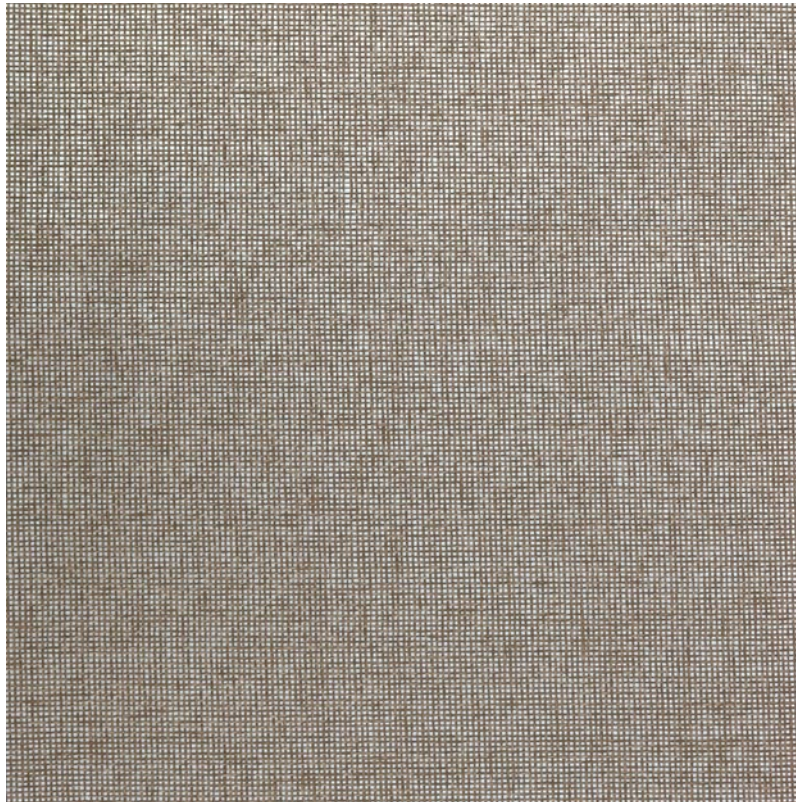
nara  
MU 9 8 6 5

nara-gold bronze



PA7588-007-091

sakuya-silver blue



PA7601-007-091

kamakura-marron horse



PA7595-007-091

kobe-pitch dark



PA7589-007-091

# gancedo

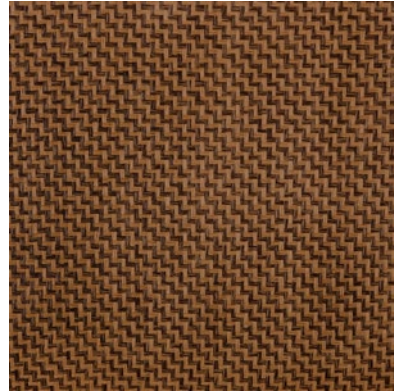
nara  
MU 9 8 6 5

ikuno-wood



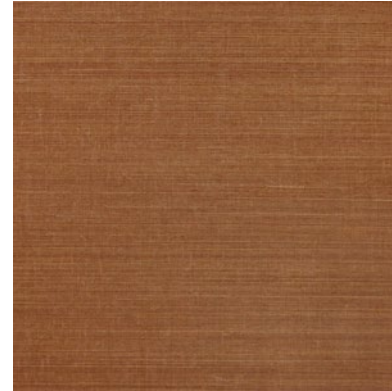
PA7597-070-091

ikuno-brownie



PA7597-007-091

kobe-chestnut brown



PA7589-070-091

kansai-walnut



PA7599-007-091



gancedo

nara  
MU 9 8 6 5

kamakura-havana tobacco



PA7595-003-091

yagura-butter



PA7596-030-091

tennoji-banana



PA7592-003-091

## FICHA TÉCNICA- technical sheet

<b>IKUNO</b> PA7597 100% PAPER 91 cm width 610 cm length	<b>KAMAKURA</b> PA7595 100% SISAL 100%GRASS 91 cm width 610 cm length	<b>KANSAI</b> PA7599 100% PAPER 91 cm width 610 cm length	<b>KITA</b> PA7594 100% GRASS 91 cm width 610 cm length	<b>KOBE</b> PA7589 100%SISAL 91 cm width 610 cm length	<b>NAGAI</b> PA7593 100% SISAL 91 cm width 610 cm length	<b>NAMBA</b> PA7590 100% PAPER 91 cm width 610 cm length
<b>NANIWA</b> PA7591 100% SISAL 91 cm width 610 cm length	<b>NARA</b> PA7588 100% SISAL 91 cm width 610 cm length	<b>SAKUYA</b> PA7601 100% PAPER 91 cm width 610 cm length	<b>TAISHA</b> PA7598 100% PAPER 91 cm width 610 cm length	<b>TENNOJI</b> PA7592 100% HEMP 91 cm width 610 cm length	<b>TODAI</b> PA7600 100% ARROWROOT 91 cm width 610 cm length	<b>YAGURA</b> PA7596 100% SISAL 91 cm width 610 cm length

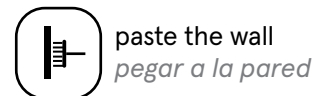
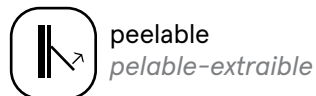
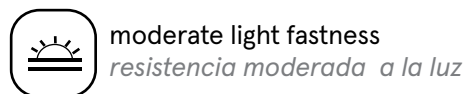
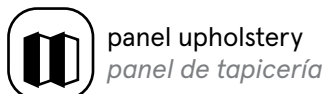
## INSTALACIÓN- Installation

1. Recomendamos un adhesivo limpio, premezclado  
*We recommend a clear, pre mixed adhesive*
2. Aplique la pasta en la parte posterior del papel, le será flexible y fácil de colgar. Deje que la pasta se vuelva pegajosa antes de colgarlo  
*Apply the paste to the back of the paper, which will become flexible and easy to hang. Allow the paste to become tacky prior to hanging(exact time will vary based on temperature, humidity, etc)*

3. No agregue agua en exceso a la pasta, ya que puede causar que el papel tiré de la parte frontal  
*Do not add excessive water to the paste as it may cause the backing paper to pull away from the front*
4. Es importante mantener la cara del revestimiento de pared libre de adhesivo  
*It is important to keep the face of the wallcovering free of adhesive*

NO MOJAR  
*Do Not Wet*

Otra manera de instalación  
Puede usar cola vinilica  
*Other way of installation  
Vinyl glue can be used*





g

1945

